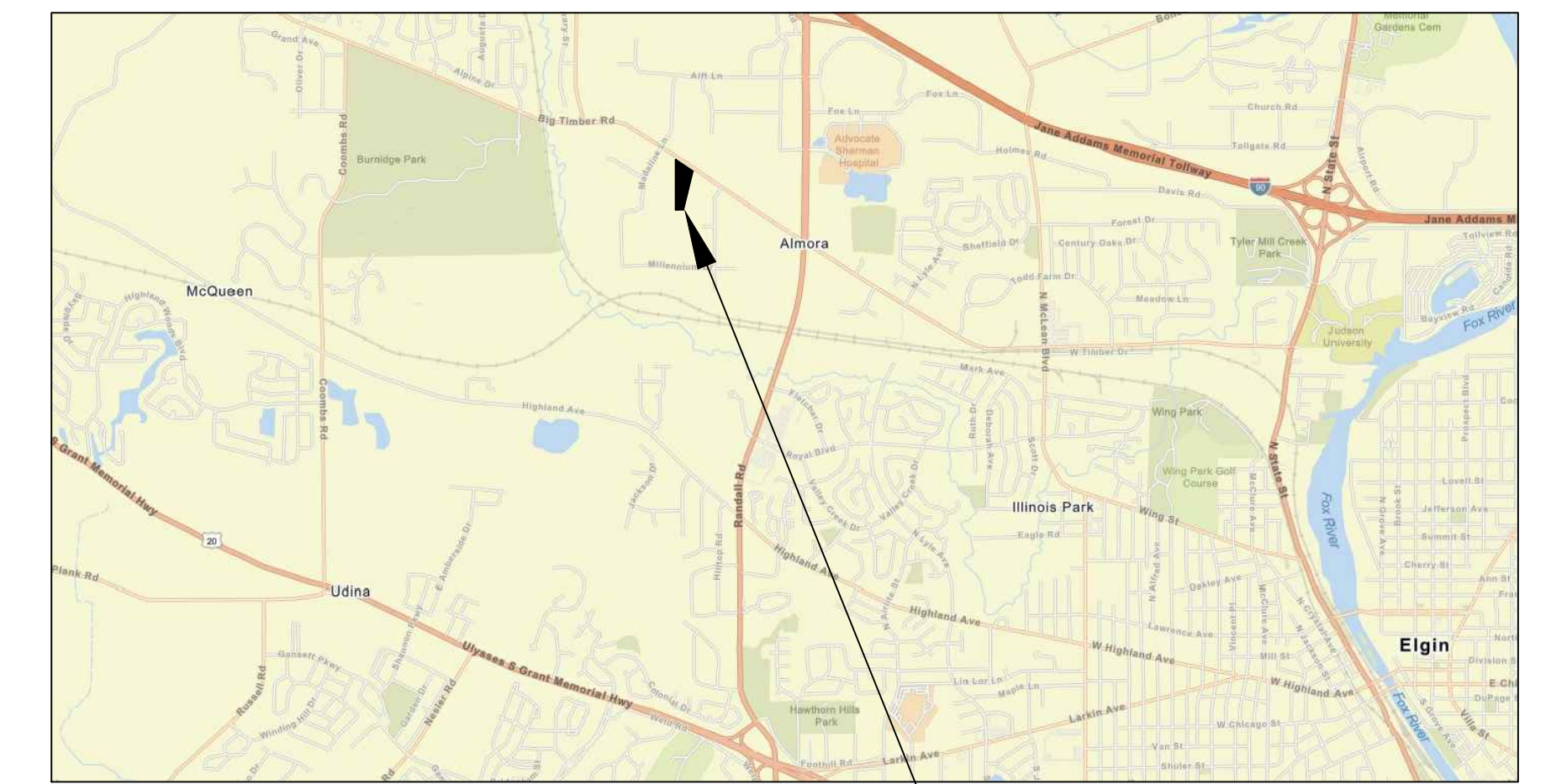


STAGED STORAGE TABLE

Elevation (ft)	Area (sf)	Volume (cf)	Volume Sum (cf)	Volume Sum (acre-ft)
866.5	2240	0.0	0.0	0.0
867.00	5957.0	1975.0	1975.0	0.045
868.00	7443.0	6686.2	8661.2	0.199
868.0	7443.0	0.0	8661.2	0.199
869.0	9045.0	8231.0	16892.2	0.388
870.0	10757.0	9888.6	26780.8	0.615
871.00	12570.0	11651.7	38432.6	0.882
872.00	14484.0	13515.7	51948.3	1.193
872.25	14979.0	3682.7	55631.0	1.277

KANE COUNTY, ILLINOIS KELLENBERGER PLUMBING AND UNDERGROUND INC. 37W507 BIG TIMBER ROAD

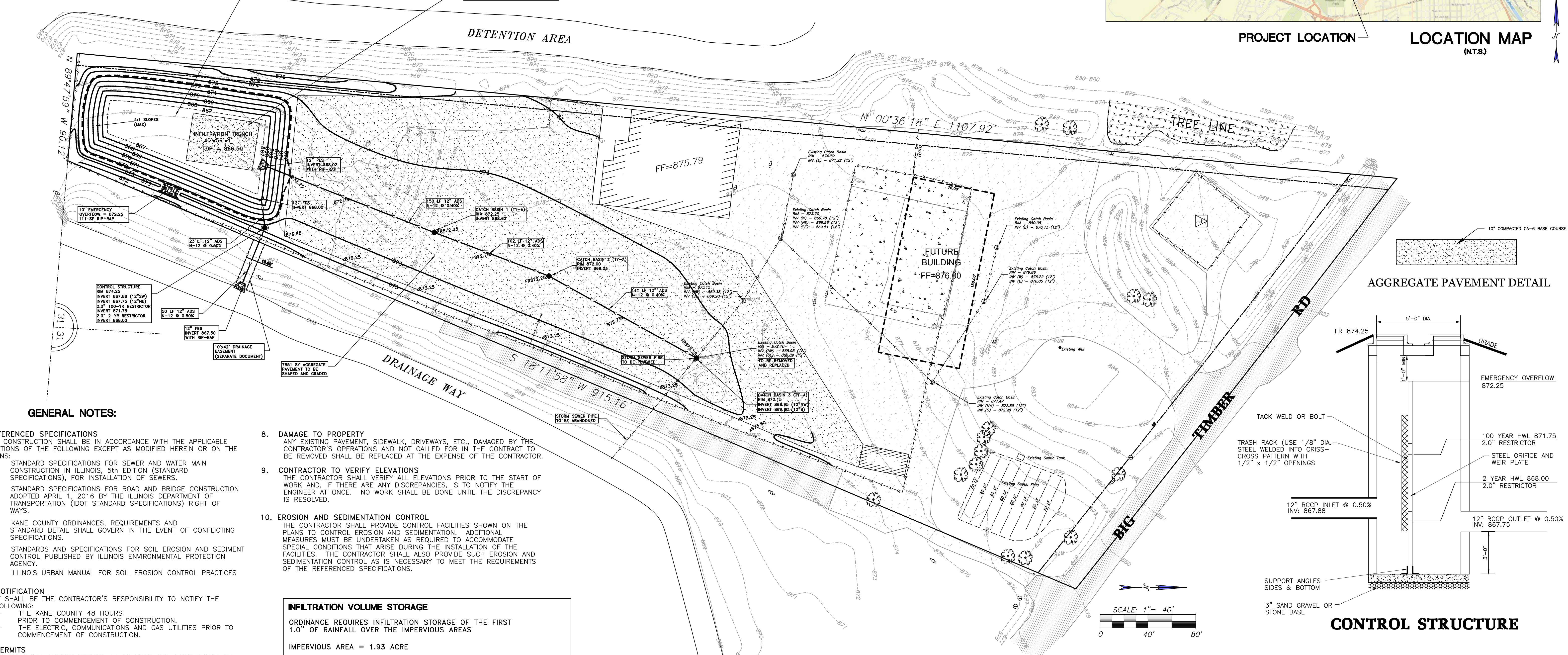
DETENTION VOLUME:
 REQUIRED DETENTION VOLUME: 1193 AC-FT
 PROVIDED DETENTION VOLUME: 1296 AC-FT
 REQUIRED RETENTION VOLUME: 0.161 AC-FT
 PROVIDED RETENTION VOLUME: 0.172 AC-FT



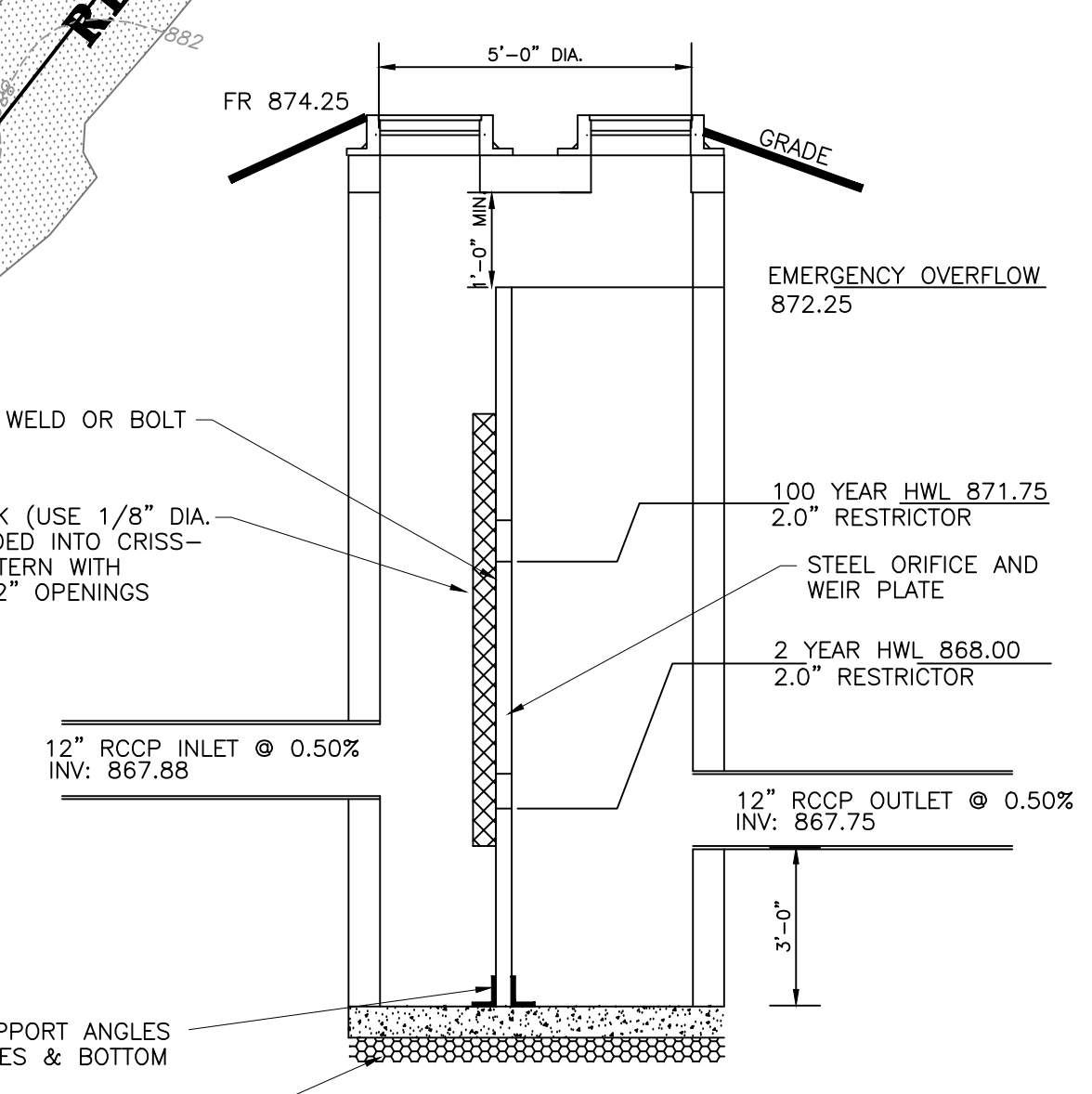
PROJECT LOCATION LOCATION MAP (N.T.S.)

DETENTION BASIN
 REQUIRED: 1.193 ACRE-FEET
 PROVIDED: 1.296 ACRE-FEET
 TOP: 873.25
 OVERFLOW: 872.25
 HWL: 872.00
 OUTLET: 868.00
 BOTTOM: 866.50
 0.25 CFS WITH 2.0" RESTRICTOR AT 871.75 FOR 100 YR EVENT
 0.10 CFS WITH 2.0" RESTRICTOR AT 868.00 FOR 2 YR EVENT

56.0' x 40.0' x 1.0'
 STONE INFILTRATION TRENCH
 TOP 866.50
 BOTTOM: 865.50



AGGREGATE PAVEMENT DETAIL



CONTROL STRUCTURE

GENERAL NOTES:

- REFERENCED SPECIFICATIONS**
 ALL CONSTRUCTION SHALL BE IN ACCORDANCE WITH THE APPLICABLE SECTIONS OF THE FOLLOWING EXCEPT AS MODIFIED HEREIN OR ON THE PLANS:
 - STANDARD SPECIFICATIONS FOR SEWER AND WATER MAIN CONSTRUCTION IN ILLINOIS, 5th EDITION (STANDARD SPECIFICATIONS), FOR INSTALLATION OF SEWERS.
 - STANDARD SPECIFICATIONS FOR ROAD AND BRIDGE CONSTRUCTION ADOPTED APRIL 1, 2016 BY THE ILLINOIS DEPARTMENT OF TRANSPORTATION (DOT STANDARD SPECIFICATIONS) RIGHT OF WAYS.
 - KANE COUNTY ORDINANCES, REQUIREMENTS AND STANDARD DETAIL SHALL GOVERN IN THE EVENT OF CONFLICTING SPECIFICATIONS.
 - STANDARDS AND SPECIFICATIONS FOR SOIL EROSION AND SEDIMENT CONTROL PUBLISHED BY ILLINOIS ENVIRONMENTAL PROTECTION AGENCY.
 - ILLINOIS URBAN MANUAL FOR SOIL EROSION CONTROL PRACTICES
- NOTIFICATION**
 IT SHALL BE THE CONTRACTOR'S RESPONSIBILITY TO NOTIFY THE FOLLOWING:
 - THE KANE COUNTY 48 HOURS PRIOR TO COMMENCEMENT OF CONSTRUCTION.
 - THE ELECTRIC, COMMUNICATIONS AND GAS UTILITIES PRIOR TO COMMENCEMENT OF CONSTRUCTION.
- PERMITS**
 OWNER SHALL SECURE PERMITS AS FOLLOWS AND COMPLY WITH ALL REQUIREMENTS OF THE PERMITS:
 - KANE COUNTY
- QUANTITIES**
 THE CONTRACTOR IS RESPONSIBLE FOR VERIFYING ALL QUANTITIES AS INDICATED ON THE PLANS. THE QUANTITIES WHICH ARE INDICATED ARE FOR BIDDING PURPOSES ONLY AND MUST BE VERIFIED. ANY DISCREPANCIES ARE TO BE REPORTED TO THE DESIGN ENGINEER.
- EXAMINATION OF THE SITE**
 THE CONTRACTOR IS RESPONSIBLE FOR EXAMINING ALL SITE CONDITIONS PRIOR TO COMMENCEMENT OF CONSTRUCTION AND IS TO COMPARE THE SITE CONDITIONS AS INDICATED ON THE ENGINEERING PLANS.
- INDEMNIFICATION**
 THE CONTRACTOR(S) SHALL INDEMNIFY THE ENGINEER AND THEIR AGENTS, THE KANE COUNTY AND THEIR AGENTS FROM ALL LIABILITY INVOLVED WITH THE CONSTRUCTION, INSTALLATION AND TESTING OF THIS WORK ON THIS PROJECT.
- LOCATION OF EXISTING UNDERGROUND UTILITIES**
 THE LOCATION OF VARIOUS EXISTING UNDERGROUND UTILITIES WHICH ARE SHOWN ON THE PLANS ARE FOR INFORMATION ONLY AND REPRESENT THE BEST KNOWLEDGE OF THE ENGINEER. IT SHALL BE THE CONTRACTOR'S RESPONSIBILITY TO VERIFY THEIR LOCATIONS AND ELEVATIONS PRIOR TO THE CONSTRUCTION OPERATIONS.

- DAMAGE TO PROPERTY**
 ANY EXISTING PAVEMENT, SIDEWALK, DRIVEWAYS, ETC., DAMAGED BY THE CONTRACTOR'S OPERATIONS AND NOT CALLED FOR IN THE CONTRACT TO BE REMOVED SHALL BE REPLACED AT THE EXPENSE OF THE CONTRACTOR.
- CONTRACTOR TO VERIFY ELEVATIONS**
 THE CONTRACTOR SHALL VERIFY ALL ELEVATIONS PRIOR TO THE START OF WORK AND, IF THERE ARE ANY DISCREPANCIES, IS TO NOTIFY THE ENGINEER AT ONCE. NO WORK SHALL BE DONE UNTIL THE DISCREPANCY IS RESOLVED.
- EROSION AND SEDIMENTATION CONTROL**
 THE CONTRACTOR SHALL PROVIDE CONTROL FACILITIES SHOWN ON THE PLANS TO CONTROL EROSION AND SEDIMENTATION. ADDITIONAL MEASURES MUST BE UNDERTAKEN AS REQUIRED TO ACCOMMODATE SPECIAL CONDITIONS THAT ARISE DURING THE INSTALLATION OF THE FACILITIES. THE CONTRACTOR SHALL ALSO PROVIDE SUCH EROSION AND SEDIMENTATION CONTROL AS IS NECESSARY TO MEET THE REQUIREMENTS OF THE REFERENCED SPECIFICATIONS.

INFILTRATION VOLUME STORAGE
 ORDINANCE REQUIRES INFILTRATION STORAGE OF THE FIRST 1.0" OF RAINFALL OVER THE IMPERVIOUS AREAS
 IMPERVIOUS AREA = 1.93 ACRE
 REQUIRED INFILTRATION STORAGE = 1.93 x (1/12) = 0.161 ACRE-FT
 INFILTRATION VOLUME PROVIDED
 VOLUME TO BE PROVIDED WITHIN EXCESS DETENTION VOLUME BELOW PROPOSED OUTLET AND PROPOSED GRAVEL INFILTRATION TRENCH BELOW THE PROPOSED DETENTION VOLUME
 PROPOSED VOLUME:
 ADDITIONAL DETENTION SYSTEM OPEN VOLUME = 0.153 ACRE-FT
 STONE INFILTRATION TRENCH BELOW DETENTION SYSTEM
 VOLUME = 56.0' x 40.0' x 1.0' x 0.36 VOID RATIO = 806 C.F.
 = 0.0185 ACRE-FT
 TOTAL PROPOSED RETENTION VOLUME = 0.1715 ACRE-FT

BENCHMARK:

KANE COUNTY BENCHMARK DESIGNATION: IL KANE 4 41 8
 STATION IS LOCATED IN THE NORTHWEST CORNER OF THE INTERSECTION OF RANDALL ROAD AND BIG TIMBER ROAD.
 DATUM POINT IS ACCESSED THROUGH A 6 INCH LOGO CAP.
 ELEV: 860.00 NAVD 88

Drainage Statement

To the best of our knowledge and belief, the drainage of surface waters will not be changed by the construction of this subdivision or any part thereof, or, that if drainage will be changed, reasonable provision has been made for the collection and diversion of such surface waters in to the public areas, or drains approved for the use by the municipal engineer, and that such surface waters are planned for in accordance with generally accepted engineering practices so as to reduce the likelihood of damages to the adjoining property because of the construction of this subdivision.

Signature: _____
 Date: _____

WARNING
 CALL 800-892-0023
 CALL BEFORE YOU DIG
 ILLINOIS REGISTERED PROFESSIONAL ENGINEER OF CIVIL ENGINEERING
 62-036658
 11/19 LIC. EXP. DATE
 DATE
 SIGNATURE

#	DATE	REMARKS

SCHEFLOW engineers
 1814 GRANDSTAND PLACE
 ELGIN, ILLINOIS 60123
 phone 847.697.7095
 fax 847.697.7099
 schefloweng.com
 Firm License No. 184-001104

KELLENBERGER
 37W507 BIG TIMBER ROAD
SITE PLAN
 ILLINOIS
 SCALE 1"=40'
 DATE 7/29/19
 DRAWN BY PCS
 CHECKED BY FCC
 JOB NO. 5524
 SHEET NO. 1 of 2